

QUICK START INSTRUCTIONS

1) Upon unpacking and removal of red dust caps, connect your suction and discharge tubing.

NOTE: For best results use tubing sizes as follows:

FLOW RATE	TUBE SIZE
0 - 50 mL / min.	1/16" to 1/4" I.D.
50 - 200 mL / min.	1/4" to 3/8" I.D.
200 - & Up mL / min.	3/8" to 1/2" I.D.

Be sure that tubing is compatible with the pumped fluid.

2) Mount pump vertically for best performance with pump head down - use Multi-position Tilt Stand or Mounting Base on "Q" pumps and standoff legs on RHSY and PiP pumps.

NOTE: The FMI Duplex pumps, Q2V or Q2B pumps can only mount horizontally.

3) Check voltage, plug in, and test pump with water. Calibration is easiest at this point using graduated cylinder and time method. Note - volume is adjusted by:

- "Q" pumps - moving blue pointer to right or left of zero depending on flow direction desired.
- "RH" pumps - turning knurled adjustment ring clockwise to decrease and counterclockwise to increase flow. "RH" pumps are shipped set at about 1/2 of full flow setting.
- "V" pumps - "variable stroke rate adjustable as well as volume." You must set a volume, using (a) or (b) above, before adjusting stroke rate.

Congratulations, you're pumping!

NOTE: Please be sure to rinse pumps out upon shut-off.

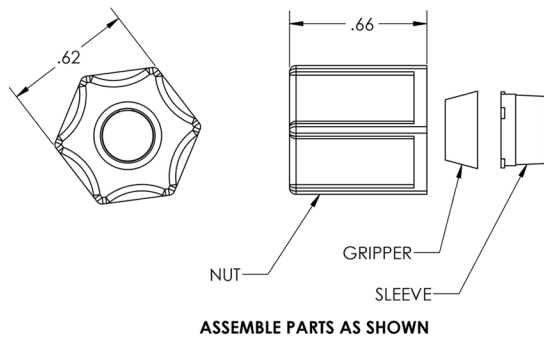
NOTE: See reverse for assembly of Compression Fittings w/2-Piece Ferrules.

In our continued effort to be environmentally responsible, we will no longer provide printed instruction manuals with each shipment. All of our instruction manuals, as well as additional support literature, are now available online in PDF format for easy download from our website at:

www.fluidmetering.com/literature.html

If you have any questions or problems, please call our **PUMP HOTLINE 800-223-3388** or 516-922-6050.

Assembly of Compression Fittings w/ 2-Piece Ferrule (PVDF, Teflon, Polypropylene)

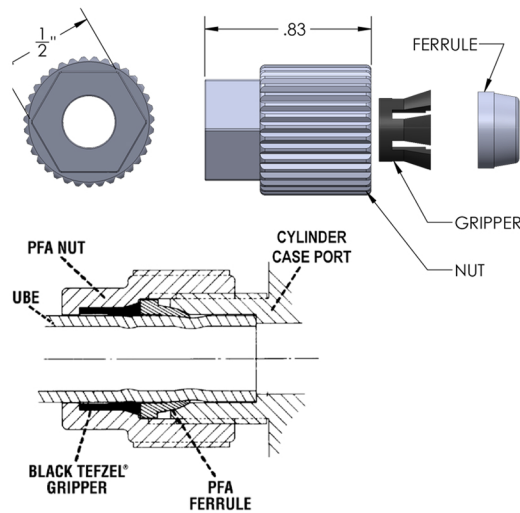
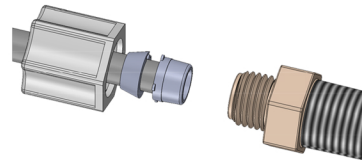


FMI P/N 110384-K

DESCRIPTION : FERRULE NUT

MATERIAL : PVDF

SPECIFICATION : 7/16-20 INTERNAL THREAD

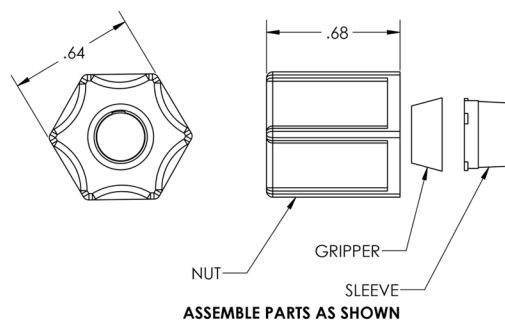


FMI P/N 110384-T

DESCRIPTION : FERRULE NUT

MATERIAL : FDA COMPLIANT, PFA FERRULE AND NUT, CARBON-FILLED TEFLON® GRIPPER.

SPECIFICATION : 1/4 OD TUBING



FMI P/N 110384-P

DESCRIPTION : FERRULE NUT

MATERIAL : POLYPROPYLENE

SPECIFICATION : 7/16-20 INTERNAL THREAD

